


- 1. Haze Removal - Not only for scenic pictures.
 - a. Enhance > Haze Removal
 - b. Enhance > Adjust Lighting > Levels (A little more control)



- 2. Crop Tool – Visualize how you want to use the photo.
 - a. Crop, Spot Healing Brush, Haze Removal, Color Picker, Text Tool, (Impact), Rotate Text



- 3. Adjustment Layers
 - a. Make 4 duplicate layers, (Ctrl/Comd J)
 - b. Turn the eye off on the top 3 and work on the one right above the Background.
 - c. Click on the Fill or Adjustment  icon.
 - d. Try Hue/Saturation (Work on next layer.)
 - e. Try Threshold (Work on next layer)
 - f. Try Gradient Fill



- 4. Change Color of Part of Picture
 - a. Select her shirt,
 - b. When you have it pretty good Select > Similar
 - c. Enhance > Adjust Color > Hue Saturation



5. Healing Clone

- a. First Use Straighten tool
- b. Crop it to get rid of big people on the left
- c. Use Spot Healing Brush and draw over people in the water.



6. An alternative would be to go to Guided > Basics > Object Removal.



7. Straighten Tool

- a. Go back to previous picture.
- b. Play with the different options for this tool.

8. Liquify Tool

- a. Duplicate the layer
- b. Filter > Distort > Liquify > Warp Tool
- c. Zoom into arm of lady on left



9. GUIDED > FUN EDITS > PHOTO TEXT

- a. I would select FIT and Clear and Small but it depends on your picture.
- b. An option would be to add a layer under your Guided Edit Base and fill it with a color, then adjust the opacity.



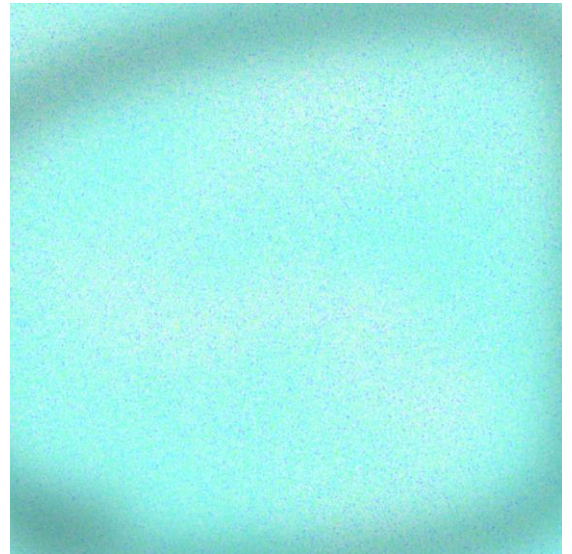
10. Paper Backgrounds using Photo

- a. Go back to the first photo we used of the Mountains. Open it and R click and make it Layer from Background.
- b. Open the tiger picture and place it on top of mountain picture. Size it down so is smaller than the background.
- c. Go to the Layer 0 and click Adjustment Layer > Hue Saturation > Click Colorize. Make adjustments
- d. Can add stroke, shadow, bevels to your picture.



11. Making your own papers

- a. File > New > Blank File > Scrapbooking > OK
- b. Fill it with a color you like. Or it could be a Gradient.
- c. Select a nice soft edge brush. Set it to a large size 600-800.
- d. Squiggle around with the Dodge & Burn Tools
- e. May want to add Noise. Filter > Noise > Add Noise.
- f. Or any of the many other Filters. I added Underpainting to this sample.



12. Using Brushes to make Background

- a. Always do your brushes on a new layer so you have control.
- b. I went to Special Effects Brushes and selected the first one 'Azalea'.
- c. Made my size big 2000 and just clicked around a little.
- d. Then went to the layer panel and adjusted the Opacity.

